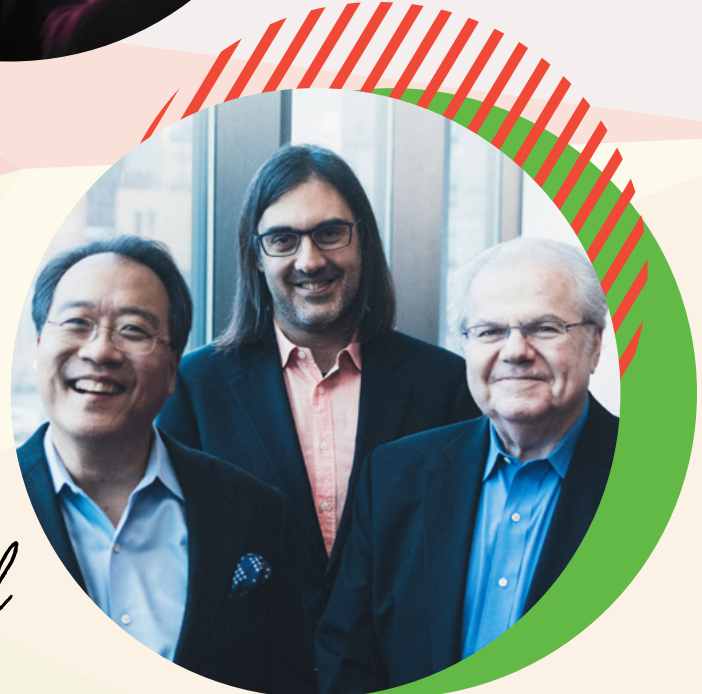




WASHINGTON
PERFORMING ARTS
We make it happen

ANNUAL REPORT

2021/22 SEASON



Welcome Back!
... and Moving Forward



A NOTE FROM JENNY BILFIELD

“Welcome Back!” We launched our 2021/22 Season (and new fiscal year) with this joyous theme in the fall of 2021. Gradually, carefully, we returned from two years of COVID closure—back into theaters, clubs, and other venues for *live, in-person* events; back into D.C. schools with our Embassy Adoption Program and other vital educational initiatives; back into the glory of gospel choir rehearsals with voices joining and lifting together in a unified space.

We were most delighted to welcome *you* back—as patrons, partners, parents, and in many other key roles. The enduring and enhanced generosity of individual and institutional supporters made it possible for us to weather the financially challenging and unsettling months of 2021/22. But we made it through, and thrived. And for that, thank you, from the bottom of our hearts.

To mark the transitional nature of 2021/22, we have given this annual report a two-part title. While welcoming our community back was an essential starting point, all of us—Board, Junior Board, Women’s Committee, staff, volunteers, and partners—had our eyes fixed on another crucial objective for the year: ***Moving Forward.***

In these pages, you will witness the results of our efforts to keep growing and deepening our service to and impact upon our community. You will see successes on stage, in the classroom, in our robust Mars Arts D.C. program, and in our festive *in-person* gala, *District of Creativity*. You’ll also find an update on our major programming and legacy initiative, the Ruth Bader Ginsburg Fund—a tribute to the late, great Supreme Court Justice and dear friend of Washington Performing Arts that will support the creation of new work and the honoring of exceptional artistry for years to come. For those who were able to participate and engage this past year, we hope that these images conjure the warmest and happiest of memories!

There’s another profound transition of 2021/22 that I’d like to note here: after four years of dedicated, compassionate, inspired, and *inspiring* service, Tom Gallagher completed his term as Board Chair, taking up the new position of Treasurer. I know that the entire Board shares my gratitude for Tom’s service as Chair and for his continued support. Succeeding Tom as Chair is the extraordinary Rudy Burwell, whom I can’t wait for our community to get to know in the unfolding season and beyond.

Thank you for your invaluable, continuing support of Washington Performing Arts. Onward, together!

In gratitude,

Jenny Bilfield
President & CEO
Washington Performing Arts

TABLE OF CONTENTS

2021/22 Presenting Season	5
Arts Education in Action	7
“Oh Happy Day”: Gospel Choirs	9
Mars Arts D.C.	11
District of Creativity: 2022 Gala	13
The Institutional Picture: By the Numbers . . .	14
Supporters, Boards and Staff	15

OUR MISSION

Washington Performing Arts champions the arts as a unifying force. Through collaborations with artists, educators, community leaders, and institutional partners, we bring wide-ranging artistic programs to stages, schools, and neighborhoods throughout our nation’s capital and, with our virtual platform, share our work throughout the world.

[FRONT COVER] Clockwise from top left: Children of the Gospel Choir at the 2022 Gala (© David J. Claypool/Kalorama Photography); Joseph & Goldie Feder Memorial String Competition awards ceremony and concert (© Fritz PhotoGraphics); Chloe Arnold’s Syncopated Ladies Live (Photo by Alex Galiatsatos); Cellist Yo-Yo Ma, violinist Leonidas Kavakos, and pianist Emanuel Ax (© Shane McCauley); An Embassy Adoption Program school visit (Photo by Washington Performing Arts Staff).

[AT LEFT] Top to bottom: Jenny Bilfield at a post-performance reception with friends, performers and creative team of Migguel Anggelo’s *English with an Accent* (Photo by Washington Performing Arts Staff); Incoming Chair of the Washington Performing Arts Board of Directors Rudy Burwell, Jenny Bilfield, outgoing Chair Tom Gallagher, and President Emeritus Doug Wheeler (Photo by Washington Performing Arts Staff); Pianist Lara Downes, poet Rita Dove, and the Thalea Quartet following *Tomorrow I May Be Far Away* (Photo by Washington Performing Arts Staff); A Family Art Moments event in Franklin Park (© Fritz PhotoGraphics).

[BACK COVER] Clockwise from top left: The String Queens at the 2022 Gala (© David J. Claypool/Kalorama Photography); Family Art Moments in Franklin Park (© Fritz PhotoGraphics); mezzo-soprano Joyce DiDonato (© Sergi Jasan); An Embassy Adoption Program school visit (Photo by Washington Performing Arts Staff); D.C. Public Schools student at the Embassy Adoption Program Mini U.N. (© Fritz PhotoGraphics).

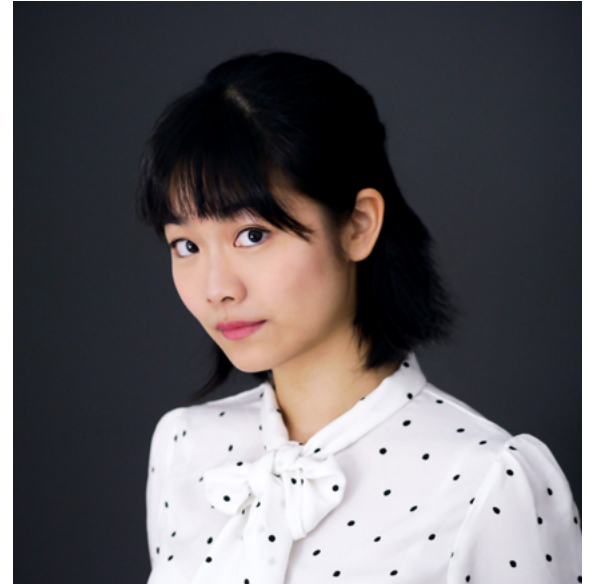


HAZEL SCOTT AT 101

2021/22 kicked off our two-year centenary tribute (postponed one year by the pandemic) to the prodigiously gifted Hazel Scott (1920–1981), a Trinidadian-American jazz and classical pianist, recording artist, movie star, and outspoken activist against racial discrimination. One of America's greatest celebrities in the 1930s and '40s, Scott fell victim to the McCarthy blacklist in 1950 and slipped into obscurity. This project strives to help revive her legacy and introduce her genius to a new generation, with programs developed in conjunction with Scott's son, Adam Clayton Powell III, Scott biographer Karen Chilton, and Washington Performing Arts Artist in Residence Murray Horwitz. Events in 2021/22 included a February virtual event with virtuosic pianist Michelle Cann and The United States Air Force Band and, in May, an intimate classical piano recital by Michelle Cann.

2021/22 PRESENTING SEASON

A return to form—and a new journey of discovery!



After a year-and-a-half of online-only presentations, 2021/22 marked the return of our community's gathering *in one place, at one time* to share the joy and inspiration of the performing arts. We came back carefully, with pandemic precautions in place. We also scaled down our season to about half the usual number of events. However, we made sure to sustain two key elements of any season: the artistic breadth and inspiration our audiences expect. Hayes Piano Series artist **Tiffany Poon** enthralled a multi-generational classical music audience with her performance at the John F. Kennedy Center for the Performing Arts Terrace Theater. Chloe Arnold's **Syncopated Ladies Live** lit up the historic Lincoln Theatre with their tap dance innovations. We shared a spell-binding, multi-disciplinary program at Sixth & I, *Tomorrow I May Be Far Away*, with pianist **Lara Downes**, Pulitzer-winning poet **Rita Dove**, and the **Thalea Quartet**. Indeed, as the images throughout these pages show, this season was characterized by innovative programming across multiple genres.

[AT LEFT] Pianist Lara Downes (© Max Barrett). Clockwise from top left: Jazz pianist-organist Matthew Whitaker rehearsing with members of the Children of the Gospel Choir (© Henry Berman); Violinist and guitarist Johnny Gandelsman at the Library of Congress (Photo by Ceylon Mitchell); Pianist Michelle Cann and Adam Clayton Powell III speaking about Hazel Scott following Cann's recital (Photo by Washington Performing Arts Staff). Inset image: Hazel Scott (Photo courtesy of the Library of Congress).

[ABOVE] Left to right: Chloe Arnold's Syncopated Ladies Live performing at Lincoln Theatre (Photo by Alex Galiatsatos); Pianist Tiffany Poon (© Sid Baker).

"Here was another next generation moved by the music, free and able to interpret and craft it into a thoughtful and coherent program. You could not have chosen better to relaunch WPA. Congratulations."

—Audience member,
December 12, 2021, Tiffany Poon performance

BY THE NUMBERS

21

events
presented

13,368

total in-person audience
members for presenting
season

10

venues in
D.C. and
beyond

1,800+

views for the February 2022
virtual performance event
celebrating Hazel Scott, featuring
pianist Michelle Cann and
The United States Air Force Band.



Välkommen till
Brightwood
Jenny
och
Maa



ARTS EDUCATION IN ACTION

From the classroom to the auditorium—and beyond!



[AT LEFT] Brightwood Elementary School students welcome guests from the Embassy of Sweden for an Embassy Adoption Program visit (Photo by Washington Performing Arts Staff).

[ABOVE]: Top to bottom: Misbin Family Memorial Chamber Music Competition; Family Art Moments in nature; Teacher and students at the Embassy Adoption Program Mini U.N. (All photos © Fritz PhotoGraphics).

Like the students we serve, we returned to the classroom in 2021/22, introducing young people to the riches of other cultures through the decades-old Embassy Adoption Program, in partnership with the D.C. Public Schools and dozens of embassies. Our stellar corps of Teaching Artists continued to provide arts instruction in schools through programs like Capital Arts Partnerships and In-School Artist Residencies. In the community, our Family Art Moments program for young audiences, launched as an online series during the pandemic, moved off the screen to bring music, dance, and theater into a local park, a cafe, and other community venues. In addition, The Joseph and Goldie Feder Memorial String Competition and the Misbin Family Memorial Chamber Music Competition provided student and adult amateur musicians with opportunities to receive feedback from judges, win prizes, and take part in performances. In 2021/22, the competitions drew 97 Feder participants and 19 Misbin chamber group participants.

“The Embassy Adoption Program has consistently been one of my favorite experiences. From attending the annual Christmas tree lighting ceremony with the Royal Norwegian Embassy, to hearing an Afghan pianist talk about his life, to watching a Taekwondo master break a board with his foot mid-backflip, this program has introduced me and my students to experiences we will never forget. I also truly love how EAP allows students to build cross-cultural connections that will stay with them for a lifetime.”

—5th grade teacher, Brightwood Education Campus

BY THE NUMBERS

**Our programs served students in all 8 DC Wards +
7 surrounding counties**

120 local and public charter schools engaged in arts education programs

50 countries represented through the Embassy Adoption Program, a partnership with D.C. Public Schools

527 adults/seniors served via the Enriching Experiences for Seniors program

157 students/ accompanying adults served via the \$10 Gateway Student Ticket Program

10,010

elementary through high school students served



"OH, HAPPY DAY!"

Men, Women, and Children of the Gospel Choirs return *in person*

After more than a year of valiantly staying connected by videoconference and through recordings assembled voice by voice, our two sensational all-volunteer choirs—Men and Women of the Gospel (MWOTG) and Children of the Gospel (COTG)—returned to *coming together* in song, in rehearsals, performances, a COTG retreat, and a MWOTG town hall. The COTG helped kick off the 2021/22 presenting season in a high-energy guest appearance with piano/organ phenom **Matthew Whitaker**. Later, the combined choirs returned to the Kennedy Center with long-term collaborators the **Choral Arts Society of Washington** in the beloved annual *Living the Dream...Singing the Dream* tribute to Dr. Martin Luther King, Jr. The combined Washington Performing Arts Gospel Choirs also headlined the season finale in a new venue for the organization, the Grand Theater at the Center for the Performing Arts at Prince George's Community College.



"Since my son has joined the choir, he has something to look forward to that speaks not only to his passions but also informs supportive discipline, enhances his music theory skills, teaches a variety of musical genres and histories, and creates a sense of belonging. COTG was the best thing to happen to him, and I couldn't be more proud when I see him walk onto the stage doing what he loves to do most."

—Children of the Gospel Choir parent

[AT LEFT] A member of the Men and Women of the Gospel Choir performing at the season closing concert (© Fritz PhotoGraphics). Top to bottom: Children of the Gospel Choir (© David J. Claypool/Kalorama Photography); The combined Gospel Choirs and the Choral Arts Society of Washington at the annual *Living the Dream...Singing the Dream* performance (© Shannon Finney); Children of the Gospel Choir (© Henry Berman).

[ABOVE] Top to bottom: Members of the Children of the Gospel Choir (© Henry Berman); COTG Artistic Director Michele Fowlin engages with the audience at the season closer (© Fritz PhotoGraphics).

BY THE NUMBERS

- 80 members of the combined Men, Women, and Children of the Gospel Choirs
- 10 performances—live and virtual—throughout the community
- 9 COTG recipients of Charlotte Schlosberg Vocal Scholarships for vocal coaching
- 2 recipients of the annual Reggie Award, given to one or more outstanding COTG singers each year
- 464 1:1 vocal coaching sessions provided for COTG members



“We were thrilled to partner with Washington Performing Arts and Mars Arts D.C. to debut Tregaron Unplugged last season—such a vibrant musical experience for the community in our parklands. Longtime Tregaron friends remarked on how exceptional the artists were and how beautifully Tregaron’s outdoor rooms showcased the performers. We look forward to continuing this partnership!”

—Lynn Parseghian, Executive Director of Tregaron Conservancy and member of the
10 Washington Performing Arts Board of Directors

MARS ARTS D.C.: SUPPORTING & SHOWCASING THE ARTS HERE AT HOME

Dynamic initiative brings local performers, businesses, and audiences together



Our signature community engagement initiative, Mars Arts D.C., is the product of a robust and ever-deepening partnership between Washington Performing Arts, Jacqueline Badger Mars, and Mars, Incorporated. Through the program, locally based artists across multiple art forms and genres perform in venues throughout the region—parks, clubs, community centers, and more—often in creative collaborations with local businesses and nonprofit organizations. After a previous virtual season, Mars Arts D.C. returned to true community immersion in 2021/22, kicking off our fall programming in October with the first annual *Tregaron Unplugged* event, presenting six musical artists and ensembles throughout the sylvan setting of D.C.'s Tregaron Conservancy. 2021/22 also saw the premiere of the *Mars Arts D.C. Concert Series at Songbyrd*, featuring four events across multiple genres—brass band, Broadway, and beyond—at the red-hot Songbyrd Music House in D.C.'s Union Market neighborhood.

[AT LEFT] Singer-songwriter VeVe Marley at *Tregaron Unplugged*. Left to right: Folk duo The Sweater Set; Classical guitarist Oscar Somersalo [All photos © Jennifer Packard].

[ABOVE] Left to right: Justin Trawick and The Common Good perform at the Mars Arts D.C. Concert Series at Songbyrd (Photo by Alex Galiatsatos); the Petalpalooza stage at the National Cherry Blossom Festival (Photo courtesy of the National Cherry Blossom Festival).

BY THE NUMBERS

19 events

74 participating artists—41 new to Mars Arts D.C.

20 partnering organizations—10 new to Mars Arts D.C.

12 venues—9 new to Mars Arts D.C.

650 attendees of *Tregaron Unplugged*

500 attendees of the *Mars Arts D.C. Concert Series at Songbyrd*

25,000+ attendees at the Mars Arts D.C.-curated Petalpalooza stage at the National Cherry Blossom Festival



“I feel as though I come from the country of creativity to the District of Creativity. As a globally recognized center of gravity for creativity in music and the arts, the Republic of Trinidad and Tobago finds consonance at many points for national interests with the work of Washington Performing Arts. First is [your] noteworthy centennial celebration of the great Hazel Scott, a daughter of our country, who became an activist and a musical trailblazer here in yours. Then there is the Embassy Adoption Program. We’ve seen firsthand just how well that program works in expanding and building cross-cultural intelligence – and we need that now. Finally, Trinidad and Tobago and Washington Performing Arts share the belief that music is among the most profound human expressions and that it helps us to find empathy and compassion for each other across national borders. It is my pleasure this evening to introduce an exceptionally gifted exemplar of our creativity: one of my countrywomen, who has performed at the Kennedy Center, Carnegie Hall, internationally, and as a Mars Arts D.C. artist with Washington Performing Arts. She’s a music educator and, really, a virtuoso on the steelpan, the national instrument of Trinidad and Tobago and our most-renowned gift of cultural diplomacy to the world.”

—Remarks by His Excellency Brigadier General (Ret’d.) Anthony W. J. Phillips-Spencer, Ambassador of the Republic of Trinidad and Tobago to the United States

[AT LEFT] Josanne Francis, Steelpannist and Mars Arts D.C. artist. Top to bottom: Khalid Thompson, painter and Mars Arts D.C. artist; Brad Linde, alto saxophonist and Mars Arts D.C. artist; Avery Gagliano, pianist (All photos © David J. Claypool/Kalorama Photography).

DISTRICT OF CREATIVITY

**Supporters celebrate the unique
artistry of our region**

Question: Who is more creative than
the D.C. community?

Answer: **No one!**

In May of 2022, we celebrated the return of an in-person Washington Performing Arts Gala with *District of Creativity: Arts & Community Amplified*. This joyful event honored icons of D.C. artistry like **Sweet Honey in the Rock**, the D.C. Public Schools Arts Team, and beloved centenarian dancer, educator, and longtime Washington Performing Arts Women’s Committee member Therrell Smith. Performers included **The String Queens**, pianist **Avery Gagliano**, steelpannist Josanne Francis, our very own Children of the Gospel Choir, and Mars Arts D.C. artists. All proceeds of the evening benefited Washington Performing Arts’s programming, including Education programs, Gospel Choirs, and our wider presentations on stage and in the community.

At the Gala and throughout 2021/22, members of our dedicated annual donor group, the Friends of Washington Performing Arts, helped make our arts and education work possible. Friends gathered at post-concert receptions, at a virtual event celebrating pianists on our season, and at a virtual holiday party featuring the creative team of Migguel Anggelo’s *English with an Accent*, as well as informally before and after many of our performances—delighting in shared time together and opportunities to learn more about Washington Performing Arts’s artists and programs.

BY THE NUMBERS

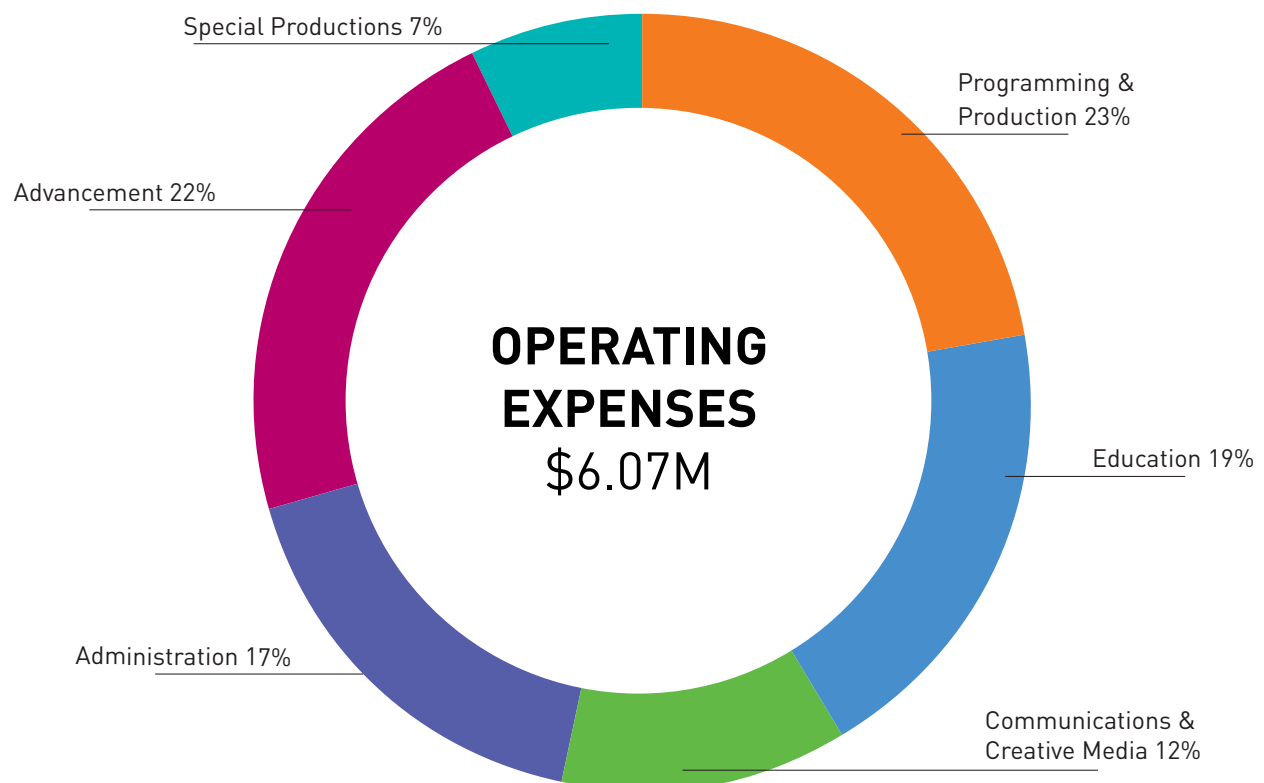
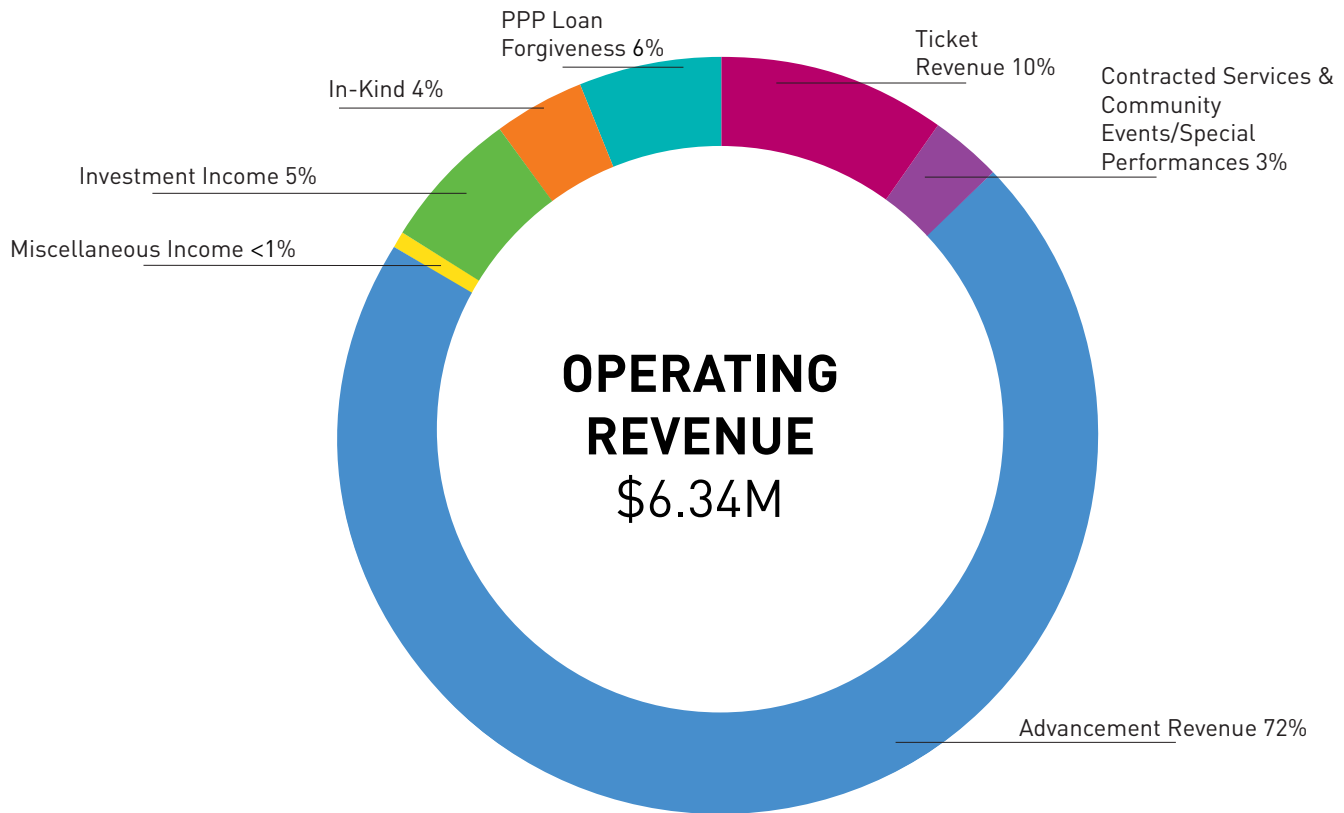
Nearly
400 Gala attendees

\$700k+ raised at Gala in
support of Washington
Performing Arts’s
Programs

22 Friends and donor
events in 2021/22

THE INSTITUTIONAL PICTURE

BY THE NUMBERS



WASHINGTON PERFORMING ARTS SUPPORTERS IN 2021/22

Washington Performing Arts gratefully acknowledges the following individuals and institutions whose generous contributions support our artistic and educational programming. Patrons who contributed \$500 or more in support of the 2021/22 season (September 1, 2021-August 31, 2022) are listed below with our thanks.

\$100,000 and above

The Morris and Gwendolyn
Cafritz Foundation
D.C. Commission on the Arts
and Humanities
Betsy and Robert Feinberg
Barbara Myers and
Tom Gallagher
Mrs. Jacqueline Badger Mars
and Mars, Incorporated
Dr. Gary Mather and
Ms. Christina Co Mather
National Capital Arts and
Cultural Affairs Program/U.S.
Commission of Fine Arts
The Edith Glick Shoolman
Children's Foundation
U.S. Small Business
Administration - Shuttered
Venue Operators Grant

\$50,000 - \$99,999

Susan S. Angell
The Beech Street Foundation
and Mr. Jeffrey Bauman and
Ms. Linda Fienberg
Dallas Morse Coors Foundation
for the Performing Arts
Estate of Mr. Donald Flanders[†]
Park Foundation
Mr. Bruce Rosenblum and
Ms. Lori Laitman
Nina and Wesley Weissberg,
in memory of Marvin Weissberg

\$35,000 - \$49,999

Estate of Ms. Susan Boyd[†]
Lyn and Barry Chasen
Philip L. Graham Fund
Pepco, An Exelon Company

\$25,000 - \$34,999

Sunny and Bill Alsup
Trista L. P. Colbert and
Theodore Colbert

Frank Islam and
Debbie Driesman
Galena-Yorktown Foundation
Dr. J. Stephen and
Mrs. Kathryn Jones
National Endowment for
the Arts
Northern Trust
Thomas J. Kim and
John F. Olson
Mrs. Jeanne W. Ruesch
James J. Sandman and
Elizabeth D. Mullin
Philip R. West and
Barbara Yellen

\$15,000 - \$24,999

Anonymous (2)
Her Excellency Shaikha Aisha
AlKhalifa, Spouse of the
Ambassador, Embassy of The
Kingdom of Bahrain
Alan Asay and Mary Sturtevant
Rudy Burwell and Mona Mohib/
Encompass Supply
The Dan Cameron Family
Foundation
Mr. and Mrs. Brian Coulter
Anne and Burton Fishman
Glenmede Trust Company
Ellen and Michael Gold
Mike and Luanne Gutermuth
Daniel Heider & the HEIDER
Real Estate Office at TTR
Sotheby's International Realty
Lucia and Fred Hill
Mary and Chris Mahle
Ms. Lydia Micheaux Marshall
Lynn Parseghian and Nat Cohen
W. Stephen and Diane E. Piper
Prince Charitable Trusts
Billy Rose Foundation
Gordon and Lisa Rush
Mr. Hubert M. Schlosberg



Top to bottom: Friends, Women's Committee members, and Reginald Van Lee, D.C. Commission on the Arts and Humanities Chair and past Chair of the Washington Performing Arts Board of Directors, at the 2022 Gala (© David J. Claypool/Kalorama Photography); KanKouran West African Dance Company (© Fritz PhotoGraphics); Feder String Competition winner performs at the Awards ceremony and concert (© Fritz PhotoGraphics).

THE RUTH BADER GINSBURG MEMORIAL FUND

The Ruth Bader Ginsburg Memorial Award and Recital Fund—launched quietly by Washington Performing Arts in Summer 2021 and publically announced in Spring 2022—will support an ongoing celebration of the late Supreme Court Justice's life, legacy, and passion for music. We will honor Justice Ginsburg—our friend, patron, and collaborator—by bestowing the RBG Memorial Award to a distinguished artist. The Awardee will have the opportunity to choose an artist deserving of wider recognition, who Washington Performing Arts will present in recital in a future season. Since the Fund was introduced, more than 55 donors have stepped forward, pledging more than \$379,000 to establish the Fund. We look forward to heralding the inaugural RBG Memorial Award Artist and Recitalist in February 2023 with the presentation of *COTTON*.

Anonymous (3)
Linda Fienberg and
Jeffrey Bauman
Carole and Henry Berman
Jenny Bilfield and
Joel Phillip Friedman
Barbara Broidy
Mr. and Mrs. Calvin Cafritz
Robin Rowan Clarke
Frank and Sunny Cook
Robert and Jamie Craft
Anthony DiResta and
Terrance Mason
Marian and
Milton Carr Ferguson
Anne and Burton Fishman
Norma Lee+ and
Morton Fungar
Barbara Myers and
Tom Gallagher
Barbara D. Gholz
Hannah Grove-DeJarnett
Sarah Haft
Jo Ann Hearld
Betsy C. Hegg
Hermann and Janet Helgert
Harryette and Stanley Helsel
Beth and Stephen Hess
Michelle Hoffmann
Judy Honig and
Stephen Robb
Judith Richards Hope,
Family Partners Fund
Murray Horwitz and
Lisa Miller
Kari L. Jaksa
Susan R. and
Sanford D. Greenberg
Kathryn and
J. Stephen Jones, MD
Ineke and Peter Kreeger/

David Lloyd Kreeger
Foundation
June and Jerry Libin
The Honorable Jan M. and
Elizabeth Lodai
Jacqueline B. Mars
Dr. and Mrs. Robert Martin
Dr. Gary Mather and
Ms. Christina Co Mather
KLMorris
Tom Kim and John Olson
W. Stephen and
Diane E. Piper
Samantha Pollack
Elizabeth Racheva and
Danail Rachev
Catherine B. Reynolds
Foundation
James J. Sandman and
Elizabeth D. Mullin
Peter Shields and
Ace Werner
Kathleen Shurtleff
Héctor J. Torres and
Jay Haddock Ortiz
Nina Totenberg and
David Reines
Rich and Kathleen Trautman
Meiyu Tsung and
Curtis Chang
Mary Jo Veverka
Christie-Anne and
Jeffrey P. Weiss
Philip R. West and
Barbara Yellen
Mr. and Mrs.
Douglas H. Wheeler

As of October 4, 2022

Drs. Marc Schlosberg and
Doreen Moreira
Peter Shields and Ace Werner/
Wiley
The Van Auken Private
Foundation
Verizon Washington, D.C.
Gary and Silvia Yacoubian/
SVS Home Audio

\$10,000 - \$14,999

Annenberg Foundation
Mr. Stanley Asrael
Mr. Peter Buscemi and
Ms. Judith Miller
Events DC
Estate of
Dr. Josephine S. Huang[†]
Mr. and Mrs. Sherman E. Katz
The Nancy Peery Marriott
Foundation
Mr.[†] and Mrs.[†] Herbert
Milstein/The Greene-Milstein
Family Foundation
Dr. Robert Misbin
Ourisman Automotive of VA/
Mr. Daniel L. Korengold and
Ms. Martha Dippell
Bobby Ourisman and
Melanie Walser
Dr. Tafaya Ransom
Doris Matsui and Roger Sant
Mr. Michael Sonnenreich
Ruth Sorenson
The Linda and Isaac Stern
Charitable Foundation, *in
memory of Isaac Stern*
Mr. and Mrs. John V. Thomas
Mary Jo Veverka

\$7,500-\$9,999

Bill and Melinda Gates
Foundation
Mr. Stephen Graham
Elaine Rose

\$5,000 - \$7,499

Anonymous (2)
The Rona and Jeffrey Abramson
Foundation
David Alden and Dina Al Sabah
Dr.[†] and Mrs.[†]
Clement C. Alpert
Ms. Betty Bullock and
Mr. John Silton
Dr. Mark Cinnamon and
Ms. Doreen Kelly
Ms. Josephine S. Cooper
Mr. Faramarz Fardshisheh
Mr. Michael Frankhuizen
GRF CPAs & Advisors
Mrs. Paula Seigle Goldman
Graham Holdings Company
Mr. and Mrs. Jay M. Hammer
Maria J. Hankerson, PhD
International Financial
Corporation/World Bank
Robert and Arlene Kogod
Ms. Ginny MacBeth
Mr. and Mrs. David O. Maxwell

Dr. Joseph May and
Mr. Brian Pesin
John and Joan McAvoy
McGuireWoods Consulting
Dr. Marian Osterweis
Estate of Gwen Petitjean[†]
Adam Clayton Powell III and
Irene M. Solet
Mrs. Lynn Rhomberg
The Nora Roberts Foundation
Kerrien Suarez
Mr. and Mrs. Brian Tommer
Mr. and Mrs. Stefan F. Tucker
The Venable Foundation
Maria Voultsides and
Thomas C. Chisnell, II
George Wasserman Family
Foundation, Inc.
Mr.[†] and Mrs. Robert H. Winter

\$2,500 - \$4,999

Frederick and Christine Andreea
Ms. Anita Antenucci
George and Barbara Beach
Riley Berg and
Austin Weatherford
Jenny Bilfield and
Joel Phillip Friedman
Matt and Melanie Blunt
Mr. and Mrs. Landon Butler
Sir and Mrs. Peter R. Crane
Dr. and Mrs. Joseph H. Danks
Dr. Morgan Delaney and
Mr. Osborne P. Mackie
Mr. Mark Sterling Determan
Ms. Kelly King Dibble
Mr. John Driscoll
Mr. and Mrs. Thomas Dungan
Mr. and Mrs. Robert Dyer
Mr. and Mrs. Glenn Epstein
Drs. Elliot and
Lily Gardner Feldman
Thomas Foster and
Steven Dahllof
Mark and Alison Francis
Mr. Donald and
Mrs. Irene Dunn Gavin
Cab and Susan Grayson
Dr. David Humenansky and
Mrs. Bootsie Humenansky
Wendell and Marie Johns
Manuel and Mary Johnson
Mr. Michael A. F. Johnson and
Mrs. Ada F. Johnson
Mr. and Mrs. Merritt Jones
Kanter Kallman Foundation,
*in memory of greater Kanter,
Kallman, and Plaut*
David and
Anna-Lena Kamenetzky
Mr. E. Scott Kasproicz and
Ms. Elizabeth Thorsey
Mr. and Mrs. David T. Kenney
Arleen and Edward Kessler
Ms. Pauline King
Jane Mary Kwass
Ms. Dina Lassow
Ms. Susan Lacz
Joan S. Leonard



Left to right: Members of the Junior Board at the 2022 Gala (© David J. Claypool/Kalorama Photography); Performance sponsors Dr. Mark Cinnamon and Doreen Kelly with cellist Seth Parker Woods, pianist Andreas Haeftiger, and violinist Hilary Hahn (Photo by Washington Performing Arts Staff).

Y. Grace Lin and Y. Morris Chen
 Mr. and Mrs. Dale Lindsay
 Judie and Harry M. Linowes
 Laura London
 Lena Scott Lundh and
 Lennart Lundh
 Mid Atlantic Arts Special
 Presenter Initiatives program,
 with support from the National
 Endowment for the Arts and
 D.C. Commission on the Arts
 and Humanities.
 Mr. Camden Miller
 Dr. and Mrs. Franklin Moses
 Mr. and Mrs. Arnold Polinger
 Mr. Trevor Potter and
 Mr. Dana Westring
 Elizabeth Racheva and
 Danail Rachev
 Cindy Reese
 Mr. and Mrs. Tom Rice
 Denise Rollins
 Beth N. Rom-Rymer and
 Jeff Miles
 Ms. Sara E. Sanders/
 Sanders Foundation
 Ami Scott and Lucius Outlaw III
 Patricia and Edwin Shirley
 Daniel and Sybil Silver
 John Staelin and
 Elizabeth Locke
 Mr. and Mrs. Mike Stevens
 Mr. Joseph D. Tartaglione
 Mr. and Mrs.
 George R. Thompson Jr.
 Mrs. Annie Totah
 Ms. Viviane M. Warren
 Ms. Maggalean W. Weston
 Claire and Tom Whelan
 James Beller and
 Christopher Wolf
 Louisa Woodville and
 Nigel Ogilvie

\$1,500 - \$2,499

Anonymous (4)
 Mrs. Rachel Abraham
 Mr. John B. Adams
 Paul Ashe
 Ann and Russel Bantham
 Lisa and James Baugh
 Jane C. Bergner, Esq.
 Dr. and Mrs. Abe Cherrick
 Maura Cooper
 Mr. Paul D. Cronin
 D.C. Office of Cable Television,
 Film, Music, & Entertainment
 The Charles Delmar Foundation
 Nancy R. Dodge
 Kenneth R. Feinberg and
 Diane Feinberg
 Sascha Fishman
 Ms. Alison Francis
 Paul Gourdin and Joanne Weiss
 Ms. Felecia Love Greer
 Ms. June Hajjar
 Dr. and Mrs. Joseph E. Harris
 Ms. Gertraud Hechl
 Mr. Craig M. Hosmer and
 Ms. Daryl Reinke
 Mr. and Mrs. Glen Howard
 Glen M. Johnson
 Ms. Ashley Kennedy
 Ms. Angela C.Y. King
 Ms. Betsy Scott Kleeblatt
 James and Sandra Lafond
 Mr. and Mrs. Richard F. Larkin
 Ms. Dina Lassow
 Mr. Andrew Lee
 Mr. Benjamin Martin/The Martin
 Family Charitable Foundation
 Rosemarie Rinn and
 Dennis McKearin
 Ms. Katherine G. McLeod
 The Hon. Mary V. Mochary and
 Dr. Philip E. Wine
 Ms. Alyssa O'Connor
 Ms. Jean Perin

Catherine Porter and Jim Fuller
 Michele Powers
 Mrs. Joan Ramsay
 Hunter and Elizabeth Rawlings
 Ms. Lynn Rhinehart
 Erica Royal
 Ambassador A. Sarukhan and
 Mrs. V. Valencia Sarukhan
 Dr. Margaret Simms and
 Dr. Charles Betsey
 Mr. and Mrs. Arman Simone
 Howard and Janice Stoodley
 Mr. and Mrs. Aaron Tomares
 Mr. Reginald Van Lee
 Ms. Raleigh Wheeler
 Dr. Adelaide and
 Mr. A. Duncan Whitaker
 Ms. Katherine Grayson Wilkins
 Carol Weiner Wilner
 Washington Performing Arts
 Women's Committee
 Kevin Yen and Tiffany Tsay

\$1,000 - \$1,499

Anonymous (4)
 HMF Beaudoin Family
 Foundation
 BentallGreenOak
 Sue Sloan Carlton
 Mr. and Mrs. Melvin Eagle
 James A. Feldman and
 Natalie Wexler
 Mr. and Mrs. Brad Figel
 Ms. Anna Forgie
 Patricia Roberts and Bill Foster
 Dr. Jacqui Francis
 Lena Galperina
 Andrea L. Grimaldi
 Cassidy J. Grunninger
 Dr. and Mrs. Hermann Helgert
 Gbenga Ige
 Cara Grayer Johnson
 Ms. Ellen Jakovic and
 Mr. David Lipson

S. Kann Sons Company
 Foundation
 Ms. Heather Kaye
 Kathryn and Will Korengold
 Simeon M. Kriesberg and
 Martha L. Kahn
 Fred Krosner and
 Linda Rosenfeld
 Ms. Robin Leeds
 André O. Lewis and
 Dr. Racquel Jemison
 Warren and Barbara Lewis
 Beth Libow
 Russell and Mimsy Lindner
 Jack L. Lipson, Esq.
 James and Barbara Loots
 Ms. Wendy Luke
 Ms. Sarah Lysaker
 Chase and Chris Maggiano
 Kathryn McKenzie and
 Brian McNeill
 Ms. Cheryl C. McQueen
 Ms. Tatjana Meerman &
 Jackie Bartell
 Dr. Glenn Nyre
 Patricia Ofori
 Kayla Ross Perry Memorial
 Foundation
 Shebbie R. and
 William S. Rice, III
 Ms. Kimberly Schenck and
 Mr. Craig Williams
 Peter and Jennifer Seka
 Prachi Shah
 Dr. Deborah J. Sherrill
 Jeremy Skog
 Ms. Elizabeth Thoet
 Ms. Ebony Thomas
 Héctor J. Torres and
 Jay Haddock Ortiz
 Ms. Nina Totenberg
 Mr. Sanford and Dr. Beth Ungar
 Ms. Christina Witsberger
 Mr. James Yap



\$500 - \$999

Anonymous (4)
Ruth and Henry Aaron
Ed⁺ and Lorraine Adams
Christine Alexander
Ms. Ernestine Arnold
Robert and Arlene Bein
Dr. and Mrs.
E. DeVaughn Belton
Ms. Francesca Britton
A'Leia Bundles
Beth Burrous and
Kevin Baer Fund
The Carlyle Group
Mr. and Mrs. Irwin Chapman
John C. Chester
Dr. Elizabeth R. Cheyney and
Mr. George Bowles
Drs. Judith and
Thomas Chused
Meg and Christian Clerc
Mr. John W. Cook
Soraya and Stephen Coppelino
Mrs. Gilan Corn
Ms. Sandra Cummins-Haid
Casey Dell'Isola
Ms. Laura Drexel
Marcia Dyson and Mary Barth
Jacqueline Fitch
Ms. Donna Florio
Ms. Catherine French
Ms. Margarita Gardiner
Jennifer Gentry
Ms. Jannes Waples Gibson
Jerome and Michelle Giles

Mr. and Mrs.
William L. Goldman
Dr. Robert J. Gottschall and
Ms. Yukiko Tani
Mr. Richard Grimes
Jack E. Hairston Jr.
Bonnie Hammerschalg
Mr. William Irwin
Mrs. Lois Jones
Dr. Vinetta Jones
Ahnika Kline
Dr. Allan Kolker
Michael Larkin and
Margaret Webster
Angela Lore
Mr. Daniel Marcus and
Dr. Maeva Marcus
Mr. and Mrs.
Rufus W. McKinney
Amy and Daniel Miller
Dr. and Mrs. Gaines M. Mimms
Lauren Bryant Mirza and
Kumail Mirza
Mrs. Jean Moore⁺
Mr. Evans Muzere
Anna Norell
Mr. Kelvin Page
Ms. Brenda A. Parker
Stephen and
Mary Ann Peterson
Mr. and Mrs. Stephen B. Peth
Richard Price and Yung Chang
Morgann and Philip Reeves
Henry and Anne Reich Family
Foundation

Elise Riley and John Simson
Carolyn Roberts
Scott Rosenbloom
Mr. Maurice Scott
Dr. Deborah Sewell
Mr. Stephen F. Sewell
Ms. Pamela Sutherland
Michelle Taylor
Dr. Wesley Delaine Thomas
and Mr. Eric Jones
John and Ashley Thompson
Mr. Peter Threadgill
Ms. Vicki Wallshein
Ms. Donna Rattley Washington
Drs. Anthony and
Gladys Watkins
Wolfgang and Carol Wawersik
Ms. Maria Weissman
Mr. and Mrs.
William H. Wheeler
Kathe and
Edwin D. Williamson
Ms. Esther H. Lim and
Mr. John C. Yang
Paul Yarowsky and
Kathryn Grumbach
Sara Trautman-Yeğenoğlu and
Ferit Yeğenoğlu
Jacqueline Zins and
Gerson Zweifach

In Kind

Anonymous
H.E. Shaikha Aisha AlKhalifa
and H.E. Shaikh Ambassador
Abdullah AlKhalifa
Anita Antenucci
Henry Berman
Carol and Landon Butler
Karen Chilton
Compass Pro Bono
Tom and Nancy Dungan
The Dupont Circle Hotel/Doyle
Bar & Lounge
Embassy of the Kingdom of
Bahrain
Embassy of Finland
Embassy of Japan
Embassy of the Kingdom of the
Netherlands
First Baptist Church of
Highland Park
Burton J. Fishman, Esq.
Tom Foster and Steven Dahllof
Susan and Cab Grayson
Ashley Kennedy
Danny Korengold and
Martha Dippell
Igor Levit
Elizabeth Locke and
John Staelin
Lubin Fine Art Portraits
Jacqueline Badger Mars
Mars, Incorporated



Page 18 (Clockwise from top left): A Concerts in Schools performance (© Fritz PhotoGraphics); Mars Arts D.C. artist Travis Gardner of The Experience Band & Show at the 2022 Gala After Party (© David J. Claypool/Kalorama Photography); Virtual Backstage Pass with sponsors, staff, cellist Yo-Yo Ma, violinist Leonidas Kavakos, and pianist Emanuel Ax.

Clockwise from top left: An Embassy Adoption Program visit to the Embassy of Finland (Photo by Washington Performing Arts Staff); Guests at the 2022 Gala (© David J. Claypool/Kalorama Photography); An Embassy Adoption Program school visit (Photo by Washington Performing Arts Staff); Family Art Moments in Franklin Park (© Fritz PhotoGraphics); A Concerts in Schools performance (© Fritz PhotoGraphics).

John McFadden and
Lisa Kabnick
Jean Perin
Remo Inc.
Ridgewells Catering
Ristorante i Ricchi
RJ Whyte Event Production
Ronald Reagan Building and
International Trade Center
Shiloh Baptist Church
Songbyrd Music House

SVS | Home Audio Speakers &
Subwoofers
Total Wine & More
Tregaron Conservancy and
Lynn Parseghian
Turkish Airlines
Vermont Avenue
Baptist Church
Washington Performing Arts
Women's Committee

† deceased

CORPORATE SUPPORTERS IN 2021/22



Events DC; Ourisman Automotive of Virginia

BentallGreenOak; Booz Allen Hamilton; The Carlyle Group; GRF CPAs & Advisors;
International Financial Corporation/World Bank; McGuireWoods Consulting; Microsoft

*For more information about corporate sponsorship opportunities, please contact
Elizabeth Hankins, Major Gifts Officer, at EHankins@WashingtonPerformingArts.org.*

WASHINGTON PERFORMING ARTS LEGACY SOCIETY

Legacy Society members appreciate the vital role that performing arts play in the community, as well as in their own lives. By remembering Washington Performing Arts in their will or estate plans, members enhance our annual fund, endowment, or donor-designated programs and help make it possible for the next generations to enjoy the same quality and diversity of presentations both on stages and in our schools and community.

Shirley and Albert H.[†] Small,
Honorary Chairs
Stefan F. Tucker, *Chair*

Anonymous (6)
Mr. David G.[†] and
Mrs. Rachel Abraham
Dr.[†] and Mrs.[†]
Clement C. Alpert
Mr. and Mrs.[†] George A. Avery
Eve E. Bachrach
Mr. James H. Berkson[†]
Susan Boyd[†]
Ms. Jenny Bilfield and
Dr. Joel Phillip Friedman
Ms. Lorna Bridenstine[†]
Charlotte Anne Cameron
Samuel J. Carabetta
Sue Sloan Carlton
Dr. Mark Cinnamon
Ms. Christina Co Mather
Chieko and Douglas Cook
Mr. and Mrs. F. Robert Cook
Ms. Josephine Cooper
Amb. William and
Laryssa Courtney
James and Susan Deerin
Mrs. Luna E. Diamond[†]
Mr. and Mrs. Edison W. Dick
Barbara[†] and
Sidney Dickstein[†]
Ms. Carol M. Dreher
Leatrice and Melvin Eagle
Ms. Eve Epstein[†]

Burton and Anne Fishman
Donald Flanders[†]
Mrs. Sophie P. Fleming[†]
Mrs. Charlotte G. Frank[†]
Rhona Wolfe Friedman
Tom Gallagher
Mr. Ezra Glaser[†]
Dr. and Mrs. Michael S. Gold
Mrs. Paula S. Goldman
Barbara W. Gordon[†]
June Hajjar
Jay and Robin Hammer
Mr. James M. Harkless
Susan B. Hepner
Carl D. Hobelman[†] and
Grace Hobelman
Ann M. Hoopes
Craig M. Hosmer and
Daryl Reinke
Charles E. Hoyt[†]
Josephine S. Huang, Ph.D.[†]
Aaron[†] and Alexine Jackson
Enid Tucker Johnson
Charles[†] and Lois Jones
Victoria and Bruce Kimble
Daniel L. Korengold
Dr. Marvin C. Korengold[†]
Jane Mary Kwass
James and Sandra Lafond
Evelyn Lear[†] and
Thomas Stewart[†]
Marion Lewis[†]
Herbert Lindow[†]

Harry M. and
Judith B. Linowes
Wendy Luke
Noreen M. Lyday
Mrs. David Maginnes
Chris and Mary Mahle
Lydia Micheaux Marshall
Dr. Gary D. Mather
Doris McClory[†]
Carol Melamed
Robert I. Misbin
Glenn A. Mitchell[†]
Mrs. Viola Musher[†]
Jeffrey T. Neal
The Alessandro Niccoli
Scholarship Award
The Pola Nirenska Memorial
Award
Gerson Nordlinger[†]
Linda Parisi and
J.J. Finkelstein
Karen and Neale Perl
Gwen Petitjean[†]
Dr. W. Stephen and
Mrs. Diane Piper
Mildred Poretsky[†]
The Honorable[†] and
Mrs. Stephen Porter[†]
Betryce Prosterman[†]
Susan E. Roberts
Elaine R. Rose
Miriam Rose[†]
Linda Rosenfeld and
Fred Krosner

James J. Sandman and
Elizabeth D. Mullin
Mrs. Ann Schein
Charlotte[†] and
Hubert (Hank) Schlosberg
Zelda Segal
Jean Head Sisco[†]
Mr.[†] and Mrs. Sanford Slavin
Shirley and Albert H.[†] Small
Mr. Robert Smith and
Ms. Natalie Moffett Smith
Mrs. Isaac Stern
Mr. Leonard Topper
Héctor Torres
Sami and Annie Totah Family
Foundation
Marilyn and Stefan F. Tucker
Reginald Van Lee
Mary Jo Veverka
Maria Voultsides and
Thomas C. Chisnell II
Frederica[†] and Ulric[†] Weil
Douglas and
Catherine Wheeler
Mr.[†] and Mrs.
Robert H. Winter
Washington Performing Arts
Women's Committee
Margaret S. Wu,
in memory of Y. H. and T. F. Wu

[†] deceased
As of October 4, 2022

WASHINGTON PERFORMING ARTS

STAFF 2021/22

EXECUTIVE STAFF

Jenny Bilfield
President & CEO

Douglas H. Wheeler
President Emeritus

Diedre Robinson
Executive Assistant to the President & CEO~

Helen Edwards
Special Assistant to the President & CEO+

ADVANCEMENT

Elizabeth Racheva
Chief Advancement Officer

Meiyu Tsung
Director of Individual Giving

Sara Trautman-Yeğenoğlu
Assistant Director of Advancement Resources

Elizabeth Hankins
Major Gifts Officer+

Natalie Groom
Manager of Advancement Operations & Analytics

Rebecca Krupa Wilcoski
Advancement Assistant

RJ Whyte Event Production
Special Events

Caroline Argrave
DAMS Consultant+

MARKETING, COMMUNICATIONS & CREATIVE MEDIA

Matthew Campbell
Director of Communications & Creative Media~

Lauren Beyea
Director of Marketing, Communications & Creative Media+

Ceylon Mitchell
Assistant Director of Communications & Creative Media+

David Dalton
Communications and Creative Media Manager~

Scott Thureen
Creative Media & Analytics Manager

Amanda Sweet, Bucklesweet
Press & Media Relations

Elayna Speight, Inked Designs
Graphic Designer

Jixaw Technologies
Website and Technology Consultant

EDUCATION & COMMUNITY ENGAGEMENT

Michelle Hoffmann
Director of Education & Community Engagement

Trisha Taylor
Assistant Director of Education

Katheryn R. Brewington
Manager of Choir Operations

Raynetta Wiggins-Jackson
Manager of Choir Curriculum & Performance~

Valerie Murray
Education & Community Program Manager

FINANCE & ADMINISTRATION

Eric James
Chief Financial Officer+~

Sarah Bright, The Bright Solutions
Interim Chief Financial Officer+

Karin Hong
Director of Operations & Administration~

Rena Hernandez
Manager of Operations & Administration+

Erica Mucci
Controller

Kamyar Fardshisheh
Finance & Administration Coordinator~

Jeanette Cortez, The Bright Solutions
Finance & Administration Coordinator+

Todd Aron, HLP Associates
IT Consultant

PATRON SERVICES (TICKET OFFICE)

Tyler Teagle
Patron Services Manager~

Chad Kinsman
Patron Services Manager+

Mbissane Diagne
Patron Services Associate+

PROGRAMMING & PRODUCTION

Samantha Pollack
Director of Programming

Kayla E. Loree
Programming Operations Manager

SPECIAL PRODUCTIONS & INITIATIVES

Eric E. Richardson
Supervising Producer

Alex Galiatsatos
Manager of Creative Media & Mars Arts D.C.

RESIDENT ARTISTS

Murray Horwitz
Artist in Residence

Michele Fowlin
Artistic Director, Children of the Gospel Choir

Theodore Thorpe III
Artistic Director, Men & Women of the Gospel Choir

Stanley J. Thurston
Artistic Director Emeritus, Washington Performing Arts Gospel Choirs

Anthony "Tony" Walker
Music Director, Washington Performing Arts Gospel Choirs

INTERNS 2021/22

Kennedy Berreckman

Talia Buksbaze

Erin Carroll~

Christa Davis~

Alexandra (Alex) DeTour

Allison Farrall

Helena Hadlock

Matt Hoffmann

Ariel Janifer

Sage Lang

Reilly Lincavicks

Ayiana Davis Polen

Madeline Redding

Nate Reilly

Sarah Strebel

Jacob Wang

Lauren Wycoff

List as of August 31, 2022

~ 2021/22 departure
+ 2021/22 arrival

WASHINGTON PERFORMING ARTS LEADERSHIP 2021/22

as of August 31, 2022

Current and Past Presidents

Jenny Bilfield[#]
President & CEO

Douglas H. Wheeler[#]
President Emeritus

Neale Perl
President Emeritus

Patrick Hayes[†]
Founder

Board of Directors

Tom Gallagher[#]
Chair/Interim Treasurer

Kelly Dibble[#]
Vice Chair

Kathryn Jones[#]
Vice Chair

Luanne S. Gutermuth[#]
Secretary

Burton J. Fishman, Esq.[#]
General Counsel

Her Excellency Shaikha Aisha AlKhalifa
Sunny Alsup
Jeffrey Bauman[#]
Rudy Burwell
Charlotte Cameron
Christina Co Mather
Michele Cober
Trista L. P. Colbert[#]
Jennifer Coulter
Debbie Driesman
Robert S. Feinberg[#]
Brad Figel

Felecia Love Greer*
Daniel Heider
Vinetta C. Jones[~]
Dina Lassow (Women's Committee)[#]
Leslie Luxemburg
(Friday Morning Music Club)
David Marventano*
Joseph May[~]
Alyssa T. O'Connor (Junior Board)[#]
John F. Olson[#]
Lynn Parseghian
W. Stephen Piper

Gordon Rush
James J. Sandman^{**}
Marc Schlosberg
Arjun Shah*
Peter Shields^{**}
Kerrien Suarez[~]
Bill Sullivan[~]
Naboth van den Broek
Philip R. West[#]
Gary Yacoubian[#]
± Ex-officio

Honorary Directors

Nancy G. Barnum
Arturo Brillembourg
Hans Bruland
Josephine Cooper
The Honorable Debbie Dingell
Roselyn Payne Epps, M.D.[†]
Sophie P. Fleming[†]
Eric R. Fox
Norma Lee Funger
Peter Ladd Gilsey[†]
Barbara W. Gordon[†]
France K. Graage[~]
Felecia Love Greer[~]
James M. Harkless, Esq.

Susan B. Hepner
ViCurtis G. Hinton[†]
Jake Jones
Steven Kaplan, Esq.
Marvin C. Korengold, M.D.[†]
Peter L. Kreeger
Robert G. Liberatore
Jerome B. Libin, Esq.
Dennis G. Lyons[†]
Dr. Gary D. Mather
Gilbert D. Mead[†]
Gerson Nordlinger[†]
Susan Porter[†]
Frank H. Rich[†]

James J. Sandman[~]
Ambassador Arturo Sarukhan and
Veronica Valencia Sarukhan
Charlotte Schlosberg[†]
Samuel A. Schreiber
Jon Sedmak
Albert H. Small[†]
Shirley Small
Ruth Sorenson
The Honorable James W. Symington
Stefan F. Tucker, Esq.
Mary Jo Veverka
Carol Wilner
Paul Martin Wolff

Past Chairs

Todd Duncan[†], Past Chairman Laureate
William N. Cafritz[†]
Aldus H. Chapin[†]
Kenneth M. Crosby[†]
Jean Head Sisco[†]
Kent T. Cushenberry[†]
Harry M. Linowes

Edward A. Fox
Hugh H. Smith
Alexine Clement Jackson
Lydia Micheaux Marshall
The Honorable Stephen W. Porter[†]
Elliott S. Hall
Lena Ingegerd Scott

James F. Lafond
Bruce E. Rosenblum
Daniel L. Korengold
Susan B. Hepner
Jay M. Hammer
Reginald Van Lee

Junior Board

Alyssa T. O'Connor
Chair

Cassidy J. Grunninger
Vice Chair, Philanthropy

Joseph May
*Secretary**

Camden Miller
Member-At-Large

Paul Ashe
Sascha Fishman
Anna Forgie
Lena Galperina
Gbenga Ige
Troy Kallman
Angela C.Y. King
William Korengold

Tiffany Lancaster
Andrew Lee
André O. Lewis
Yinhsiu Grace Lin
Sarah Lysaker
Benjamin Martin
Katie Nunner
Patricia Ofori

Erica Royal
Prachi Shah
Jeremy Skog
Kristen Taylor
Ebony Thomas
Raleigh Wheeler
Kevin Yen

Women's Committee

Dina Lassow
President

Lorraine Paladino Adams
1st Vice President

Vinetta Jones
2nd Vice President

Denise Rollins
Recording Secretary

Carolyn Ross Wilson
Assistant Recording Secretary

Elaine Rose
Treasurer

Francesca Britton
Assistant Treasurer

Wendy Shapiro
Corresponding Secretary

Arleen Kessler
Immediate Past President

Barbara Mackenzie Gordon[†]
Founding President

Ernestine Arnold
Toni-jeanne Baker
Beverly Bascomb
Sylvia Belton
Bunny Bialek
Patricia Bonds
Gwendolyn Brown
Elsie Bryant
Charlotte Cameron
Claire Cherry-Ruiz
Carleene Dei[†]
Jan DuPlain
Naomi Freeman
Jannes Waples Gibson
Linda Goldman
Paula Goldman
Rosemarie Harris
Ruth Reed Hodges

Enid Johnson
Madelyn Elise Johnson
Edna Robinson Jones
Elaine Kolodny
Albertina Lane
Eleanor Leak
Hilda McIntosh
Glendonina McKinney
Cheryl McQueen
Dianne McRae
Annette Morchower
Paulette Nehama
Jacqueline Newsome-Williams
Brenda Parker
Debbie Rayford
DeVera Redmond
Shebbie Robinson Rice
Changamiré Ross

Rita Segerman
Deborah Sewell
Billie LaVerne Smith
Therrell Smith
Leah Tavens
Pauline Thompson
Brenda Vaughan
Diana Johnson Veilleux
Gladys M. Watkins
Bette Davis Wooden

[†] deceased

Executive Committee

* Concluded service during 2021/22

~ Joined in 2021/22



WASHINGTON PERFORMING ARTS

1400 K Street NW, Suite 500
Washington, D.C. 20005

(202) 833-9800

WashingtonPerformingArts.org